



EDUCATIONAL RESOURCES

New ICD-10 Coding Updates for Home Health & Hospice

Presented by:

Sharon Litwin,
RN, BSHS, MHA, HCS-D, COQS

Litwin Home Health Consulting, LLC 
Litwinhomehealthconsulting.net

 HOME HEALTH  HOSPICE



ACHCU IS A BRAND OF ACCREDITATION COMMISSION *for* HEALTH CARE



Today's Presenter

- Sharon Litwin, RN, BSHS, MHA, HCS-D, COQS
- slitwinconsulting@outlook.com

Litwin Home Health
Consulting, LLC



Litwinhomehealthconsulting.net

Overview

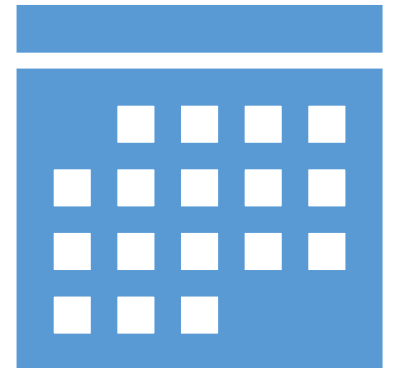
- FY 2024 ICD-10-CM code set has:
 - 395 new diagnosis codes
 - 25 deletions
 - 13 revisions for the fiscal year
 - New codes added throughout the chapters for increased specificity
 - There are not changes in every section
 - Such as Chapter 12 – Diseases of the skin and subcutaneous tissue (L00-L99)

Following New Codes Is Not Optional

- Adherence to these guidelines when assigning ICD-10-CM diagnosis codes is required under the Health Insurance Portability and Accountability Act (HIPAA).
- The diagnosis codes (Tabular List and Alphabetic Index) have been adopted under HIPAA for all healthcare settings.

Begin October 1, 2023...but...With Home Health, 30 Day Billing Periods:

- October 1 claims from the 30-day billing period beginning September 2 will need the new code set
 - So may want to do dual coding and /or
 - Will have to correct codes prior to claim being submitted or will be rejected
- Once rejected, then you can put the 2024 codes in



ICD-10-CM Official Guidelines for Coding and Reporting



Sepsis due to a postprocedural infection

- For **sepsis** following a **postprocedural wound (surgical site) infection**, a code from T81.41 to T81.43, infection following a procedure, or a code from O86.00 to O86.03, infection of obstetric surgical wound, that identifies the site of the infection should be **sequenced** first, if known.
- Assign an additional code for sepsis following a procedure (T81.44) or sepsis following an obstetrical procedure (O86.04).

Screening for COVID-19

- Home Health/ Hospice did not use the code for screening COVID-19 during the PHE.
- The code used was Z20.822 Contact with and (suspected) exposure to COVID-19.
- Now, on Oct 1, for screening for COVID-19, including preoperative testing, assign **code Z11.52, encounter for screening for COVID-19.**

Exceptions

- There are a few exceptions when code assignment may be based on medical record documentation from clinicians who are not the patient's provider:
 - Body Mass Index (BMI)
 - Depth of non-pressure chronic ulcers
 - Pressure ulcer stage
 - Coma scale
 - NIH stroke scale (NIHSS)
 - Social determinants of health (SDOH) classified to Chapter 21
 - Laterality
 - Blood alcohol level
 - Under immunization status

Coma Guidelines

- Code R40.20. Unspecified coma, **should** be assigned **when the underlying cause of the coma is not known, or the cause is a traumatic brain injury and the coma scale is not documented in the medical record.**
- Do not report codes for unspecified coma, individual or total Glasgow coma scale scores for a patient with a medically induced coma or a sedated patient.
- 1. **Coma Scale** - The coma scale codes (R40.21- to R40.24-) can be used in conjunction with traumatic brain injury codes. These codes **cannot be used with code R40.2A, Nontraumatic coma due to underlying condition.** They are primarily for use by trauma registries, but they may be used in any setting where this information is collected. The coma scale codes should be sequenced after the diagnosis codes.

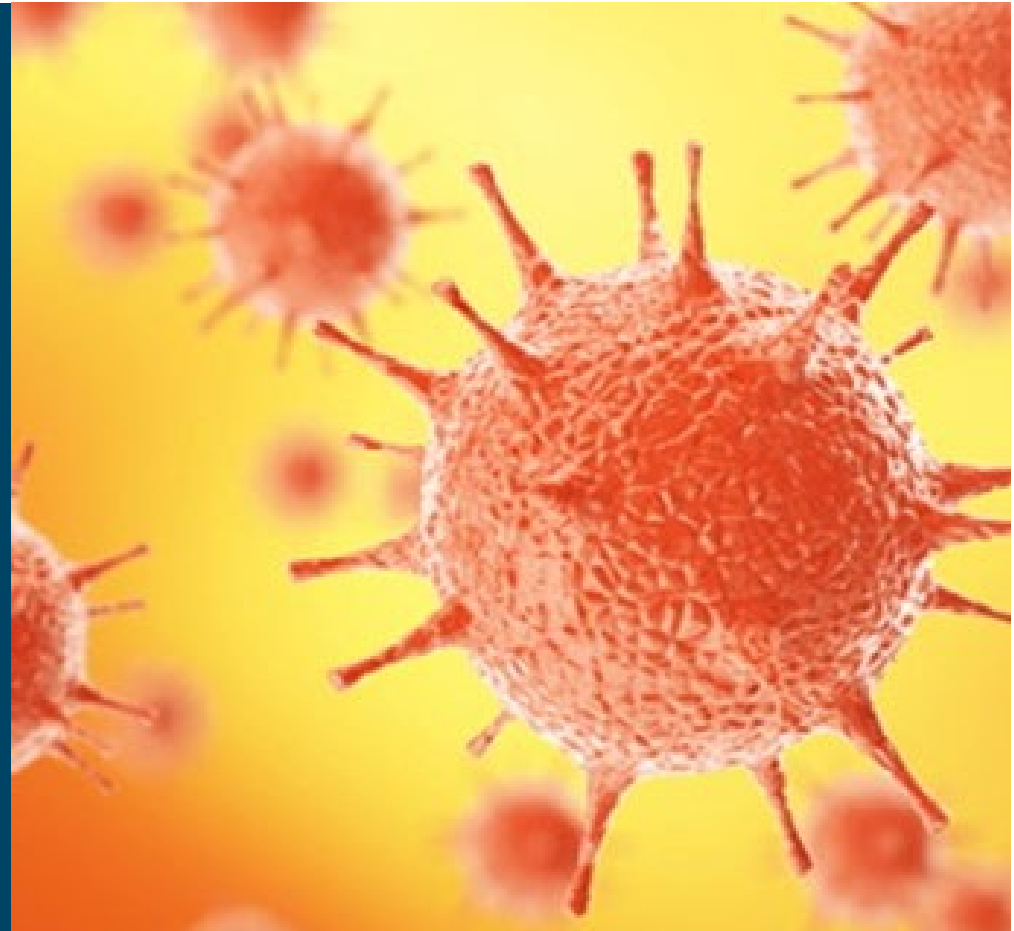
Admission for Chemo, Immunotherapy and Radiation Therapy

The word *Solely* was changed to *Chiefly*.

2. Patient admission/encounter **chiefly** for administration of chemotherapy, immunotherapy, and radiation therapy.
 - If a patient admission/encounter is **chiefly** for the administration of chemotherapy, immunotherapy or external beam radiation therapy assign code Z51.0, Encounter for antineoplastic radiation therapy, or Z51.11, Encounter for antineoplastic chemotherapy, or Z51.12, Encounter for antineoplastic immunotherapy as the first-listed or principal diagnosis.
 - If a patient receives more than one of these therapies during the same admission, more than one of these codes may be assigned, in any sequence.

Chapter 1

Certain infectious and
parasitic diseases
(A00-B99)



A41.54 Sepsis due to Acinetobacter baumannii

- **New:** Specific Code – A41.54 Sepsis due to Acinetobacter baumannii
 - Currently have only: A41.59 Other Gram-negative sepsis
- **New:** B96.83 Acinetobacter baumannii as the cause of diseases classified elsewhere

Added *Acinetobacter baumannii* to Other Chapters – J

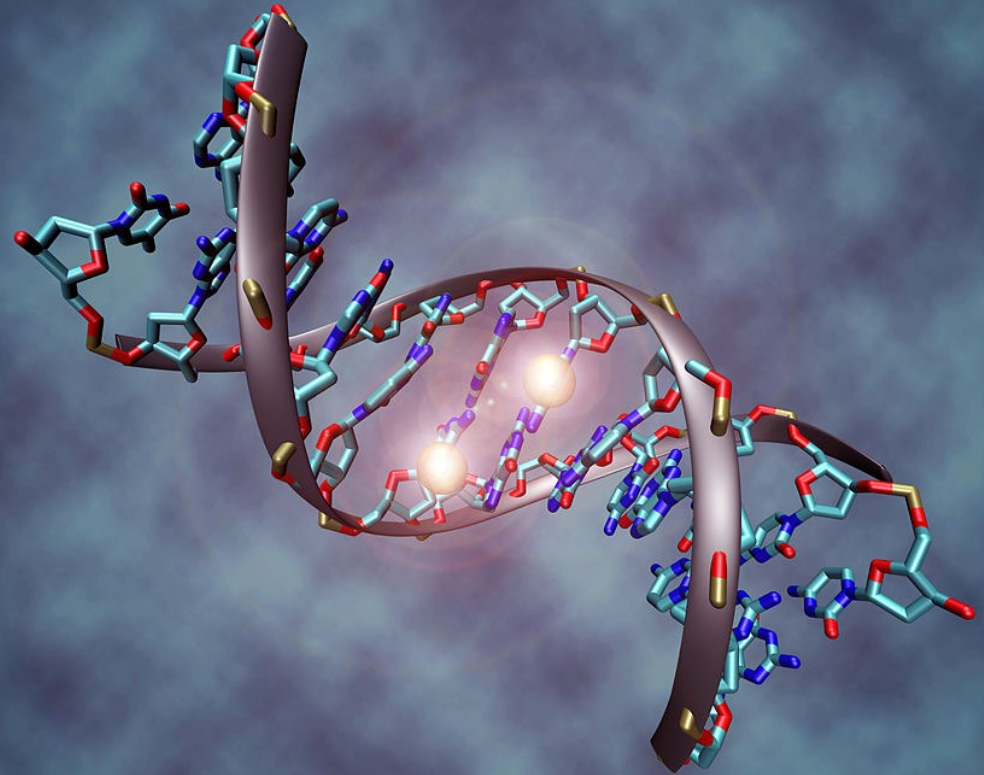
- J15.6 Pneumonia due to other Gram-negative bacteria
- **NEW** – J15.61 Pneumonia due to *Acinetobacter baumannii*
- J15.69 Pneumonia due to other Gram-negative bacteria
 - Moved to here from J15.16 – pneumonia due to other gram-negative bacteria
 - Pneumonia due to *Serratia marcescens*

Added *Acinetobacter baumannii* to Other Chapters – Z

- Z16.1 Resistance to beta lactam antibiotics
- **NEW:** Z16.13 Resistance to Carbapenem
- **NEW:** Carrier (no symptoms) codes
- Z22.39 Carrier of other specified bacterial diseases
- Z22.34 Carrier of *Acinetobacter baumannii*
- Z22.340 Carrier of carbapenem-resistant
 - *Acinetobacter baumannii*
- Z22.341 Carrier of carbapenem-sensitive *Acinetobacter baumannii*
- Z22.349 Carrier of *Acinetobacter baumannii*, unspecified
- Z22.35 Carrier of Enterobacterales
 - Z22.350 Carrier of carbapenem-resistant Enterobacterales
 - Z22.358 carrier of other Enterobacterales
 - Carrier of carbapenem sensitive Enterobacterales
- Z22.359 Carrier of Enterobacterales, unspecified

Chapter 2

Neoplasms
(C00-D49)



D13.99 Benign neoplasm of ill-defined sites within the digestive system

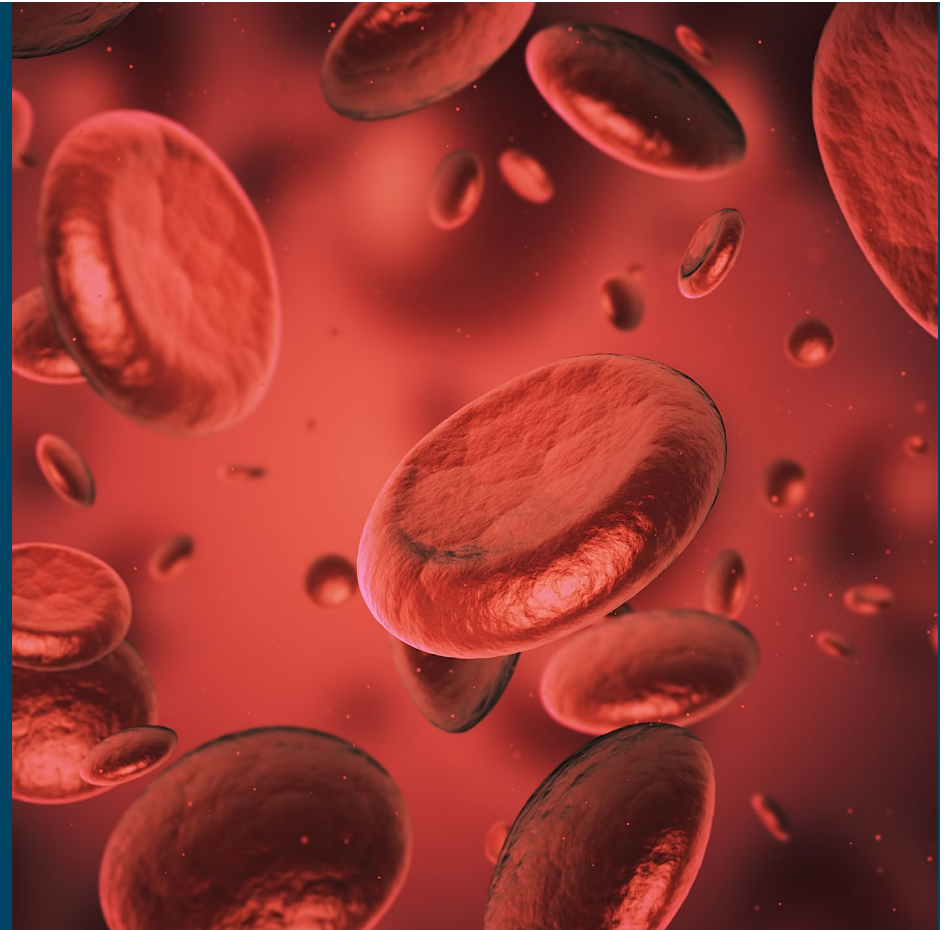
- D13.9 Benign neoplasm of ill-defined sites within the digestive system
- **NEW: D13.91** Familial adenomatous polyposis
- **NEW:** Code also associated conditions, such as:
- D12.6 benign neoplasm of colon malignant neoplasm of colon
- D13.99 Benign neoplasm of ill-defined sites within the digestive system
 - Benign neoplasm of digestive system NOS
 - Benign neoplasm of intestine NOS
 - Benign neoplasm of spleen

D48.1 Neoplasm of uncertain behavior of connective & other soft tissue – Expanded

- **D48.11 Desmoid tumor**
- **D48.110 Desmoid tumor of head and neck**
- **D48.111 Desmoid tumor of chest wall**
- **D48.112 Desmoid tumor, intrathoracic**
- **D48.113 Desmoid tumor of abdominal wall**
- **D48.114 Desmoid tumor, intraabdominal**
 - Desmoid tumor of pelvic cavity
 - Desmoid tumor, peritoneal, retroperitoneal
- **D48.115 Desmoid tumor of upper extremity and shoulder girdle**
- **D48.116 Desmoid tumor of lower extremity and pelvic girdle**
 - Desmoid tumor of buttock
- **D48.117 Desmoid tumor of back**
- **D48.118 Desmoid tumor of other site**
- **D48.119 Desmoid tumor of unspecified site**
- **D48.19 Other specified neoplasm of uncertain behavior of connective and other soft tissue**

Chapter 3

Diseases of the blood and blood-forming organs and certain disorders involving the immune mechanism (D50-D89)



D57 Sickle-cell disorders – Added Dactylitis codes

- D57.04 Hb-SS disease with dactylitis
- D57.214 Sickle-cell/Hb-C disease with dactylitis
- D57.414 Sickle-cell thalassemia, unspecified, with dactylitis
- D57.434 Sickle-cell thalassemia beta zero with dactylitis
- D57.454 Sickle-cell thalassemia beta plus with dactylitis
- D57.814 Other sickle-cell disorders with dactylitis

D61.09 Other constitutional aplastic anemia – Expanded

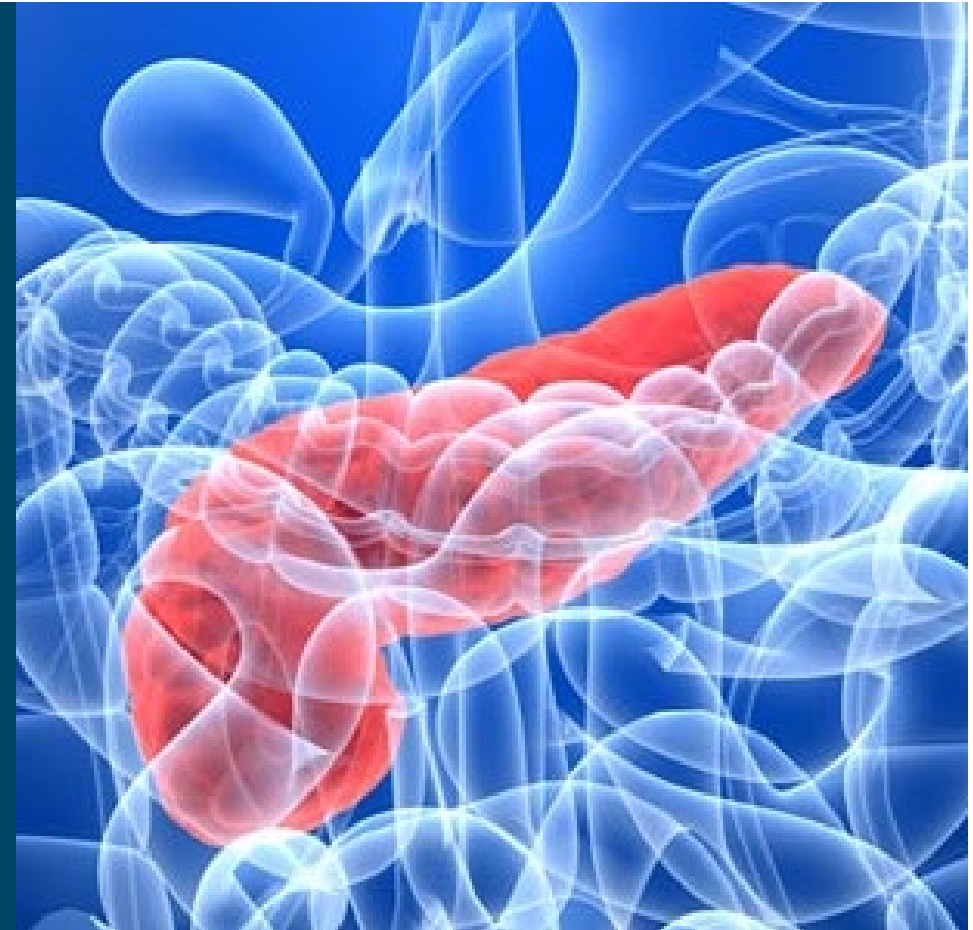
- **D61.02 Shwachman-Diamond Syndrome**
- **Code also**, if applicable, associated conditions such as:
 - acute myeloblastic leukemia (C92.0-)
 - exocrine pancreatic insufficiency (K86.81)
 - myelodysplastic syndrome (D46.-)
- **Use additional code**, if applicable,
 - for genetic susceptibility to other malignant neoplasm (Z15.09)
- **D61.09 Other Constitutional Aplastic Anemia**
 - Fanconi's anemia
 - Pancytopenia with malformations

D89.89 Expanded for Specificity

- D89.89 Other specified disorders involving the immune mechanism, not elsewhere classified
- **NEW:** D89.84 IgG4-related disease
 - Immunoglobulin G4-related disease

Chapter 4

Endocrine, nutritional and
metabolic diseases
(E00-E89)



E20.8 Other hypoparathyroidism – Expanded

- E20.8 Other hypoparathyroidism
- **New** E20.819 Hypoparathyroidism due to impaired parathyroid hormone secretion, unspecified
- **New** E20.8 Other hypoparathyroidism
- **New** E20.818 Other specified hypoparathyroidism due to impaired parathyroid hormone secretion
- **New** E20.810 Autosomal dominant hypocalcemia
 - Autosomal dominant hypocalcemia type 1 (ADH1) & type 2 (ADH2)
 - **Code also**, if applicable, any associated conditions, such as:
 - calculus of kidney (N20.0)
 - chronic kidney disease (N18.-)
 - respiratory distress (J80, R06.-)
 - seizure disorder (G40.-, R56.9)
- **New E20.811** Secondary hypoparathyroidism in diseases classified elsewhere
- **New E20.812** Autoimmune hypoparathyroidism

E74.0 Glycogen storage disease

- **E74.05 Lysosome-associated membrane protein 2 [LAMP2] deficiency**
- Danon disease **Code also**, if applicable, associated manifestations like:
 - dilated cardiomyopathy (I42.0)
 - obstructive hypertrophic cardiomyopathy (I42.1)
- **E74.09 Other glycogen storage disease**
- Andersen disease
- Glycogen storage disease, types 0, IV, VI-XI
- Hers disease
- Liver phosphorylase deficiency
- Muscle phosphofructokinase deficiency
- Tauri disease

Leukodystrophy

- Revised from **E75.29 to G 31.80**
- Additions made:
- G31.80 Leukodystrophy – added:
- G.116 With vanishing white matter disease
- G90.B LMNB1-related autosomal dominant
- **E75.25** Metachromatic
- **G11.5 Pol** III related
- **G31.86** Alexander disease

E88 Other and unspecified metabolic disorders

- **E88.49 Other mitochondrial metabolism disorders:**
- **NEW: E88.43 Disorders of mitochondrial tRNA synthetases**
- **E88.81 Metabolic syndrome and other insulin resistance**
 - **Use additional codes** for associated manifestations, such as obesity (E66.-)
 - **E88.810 Metabolic syndrome**
 - Dysmetabolic syndrome
 - **E88.811 Insulin resistance syndrome, Type A**
 - **E88.818 Other insulin resistance**
 - Insulin resistance syndrome, Type B
 - **E88.819 Insulin resistance, unspecified**

E88.A Wasting disease (syndrome) due to underlying condition

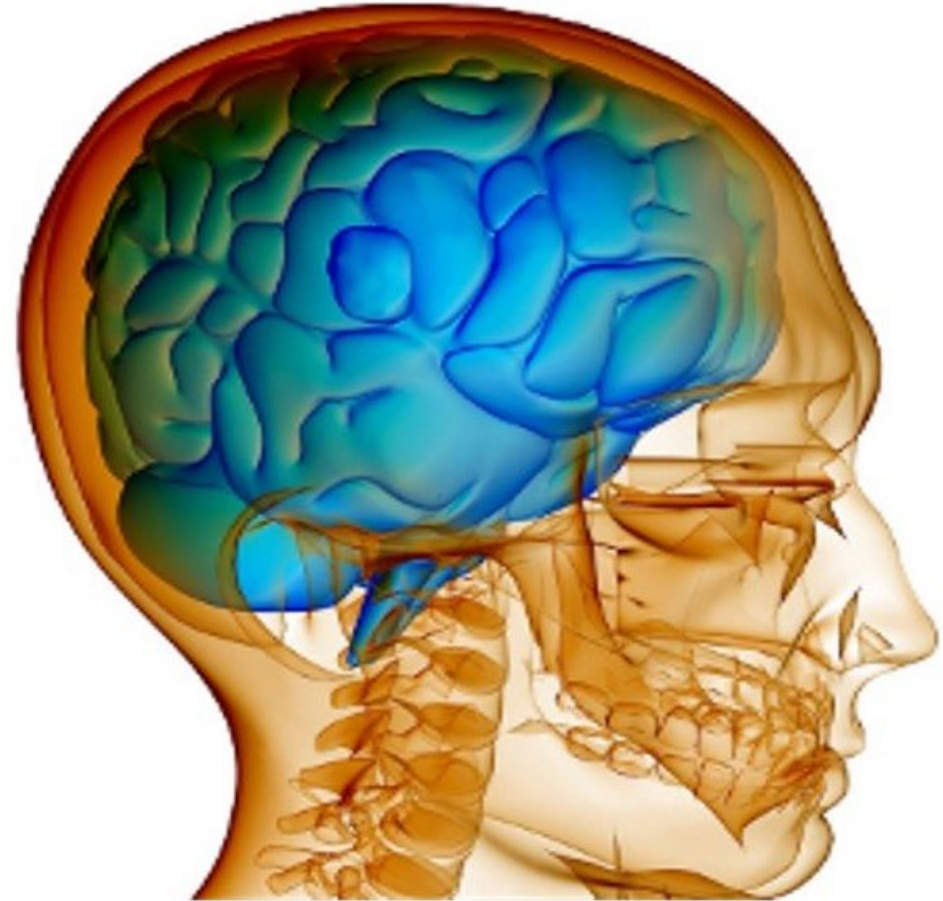
- Includes Cachexia due to underlying condition
- Code first underlying condition
- Excludes:
 - **Cachexia NOS (R64)**
 - Nutritional marasmus (E41)

E88.A Wasting disease (syndrome) due to underlying condition (...continued)

- Excludes2:
 - Failure to thrive (R62.51, R62.7)
- **Cachexia changed in Errata**
- Remains R64, with deletion of “due to malnutrition R64
- Added due to malnutrition (see also Malnutrition, severe) E88.A
- Added due to underlying condition E88.A

Chapter 5

Mental, behavioral, and
neurodevelopmental
disorders
(F01 – F99)



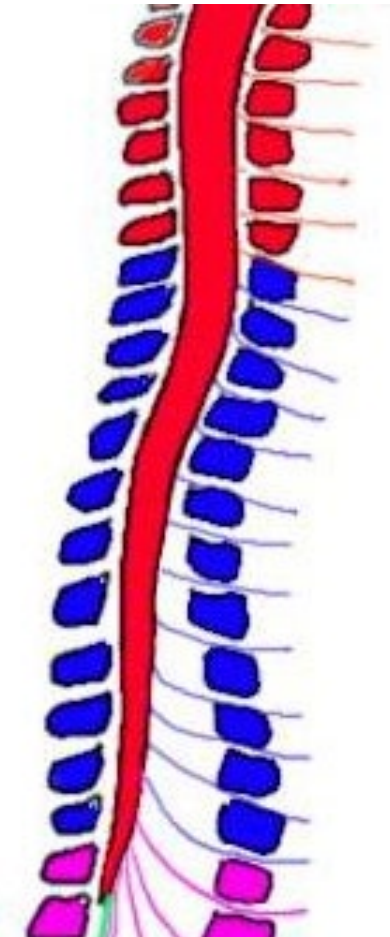
F1 Opioid related disorders

opioid associated amnestic syndrome (OAS)

- F11.1 Opioid abuse
 - F11.8 Opioid abuse with other opioid induced disorder
 - F11.88 Opioid abuse with other opioid induced disorder
 - **New – Opioid associated amnestic syndrome (OAS) with opioid abuse**
 - F11.2 Opioid dependence
 - F11.28 Opioid dependence with other opioid induced disorder
 - F11.288 Opioid dependence with other opioid induced disorder
 - **New – Opioid associated amnestic syndrome (OAS) with opioid dependence**
 - F11.9 Opioid use, unspecified
 - F11.98 Opioid use, unspecified with other opioid induced disorder
 - F11.988 Op use, unspecified with other specified opioid induced disorder
 - **New – Opioid-associated amnestic syndrome without use disorder**

Chapter 6

Diseases of the Nervous System
(G00-G99)



Leukodystrophy – Remember ... Moved from E to G Chapter

- **G11.5 Hypomyelination** – hypogonadotropic hypogonadism – hypodontia
 - 4H syndrome
 - Pol III-related leukodystrophy
- **G11.6 Leukodystrophy with vanishing white matter disease**
- **G31.80 Leukodystrophy, unspecified**
- **G31.86 Alexander disease**
- **G90.B LMNB1 – related autosomal dominant leukodystrophy**

G20 Parkinson's Disease Expanded to Add OFF Episodes

G20.A1

G20.A2

G20.B1

G20.B2

G20.C

"Off" time is when Parkinson's symptoms — motor and/or non-motor — return between medication doses. Per The Michael J. Fox Foundation

G20 Parkinson's Disease

- **G20.A Parkinson's disease without dyskinesia**
- **G20.A1 Parkinson's disease without dyskinesia, without mention of fluctuations**
 - Parkinson's disease NOS
 - Parkinson's disease without dyskinesia, without mention of OFF episodes
- **G20.A2 Parkinson's disease without dyskinesia, with fluctuation**
 - Parkinson's disease without dyskinesia, with OFF episodes

G20 Parkinson's Disease

G20.B Parkinson's disease with dyskinesia

- **Excludes1:** drug induced dystonia (G24.0-)
- **G20.B1 Parkinson's disease with dyskinesia, without mention of fluctuations**
 - Parkinson's disease with dyskinesia, without mention of OFF episodes
- **G20.B2 Parkinson's disease with dyskinesia, with fluctuations**
 - Parkinson's disease with dyskinesia, with OFF episodes

G20 Parkinson's Disease

- **G20.C Parkinsonism, unspecified**

- Parkinsonism, NOS
- **Excludes1:**
 - Parkinson's disease NOS (G20.A1)
 - Parkinson's disease with dyskinesia (G20.B-)
 - Parkinson's disease without dyskinesia (G20.A-)
 - Secondary parkinsonism (G21-)

G23 Other degenerative diseases of basal ganglia expanded

- **New G23.3** Hypomyelination with atrophy of the basal ganglia and cerebellum
 - H-ABC
- **G23.8** Other specified degenerative diseases of basal ganglia

G31 Other degenerative diseases of nervous system, not elsewhere classified – Expanded

Specific New Diagnoses rather than in other:

- **G31.80 Leukodystrophy, unspecified**
- **G31.86 Alexander disease**
- **G31.89 – Other specified degenerative diseases of nervous system**

G37.8 Other specified demyelinating diseases of central nervous system

Added:

- **G37.81 Myelin oligodendrocyte glycoprotein antibody disease**
 - MOG antibody disease
- **Code also** associated manifestations, if known, such as:
 - noninfectious acute disseminated encephalomyelitis (G04.81)
 - neuromyelitis optica (G36.0)
- **G37.89 Other specified demyelinating diseases of central nervous system**

G40.3 Generalized idiopathic epilepsy and epileptic syndromes

- **Added** Lafora progressive myoclonus epilepsy NOS
- **G40.301** Generalized idiopathic epilepsy and epileptic syndromes, not intractable, with status epilepticus
 - **NEW: G40.C01** Lafora progressive myoclonus epilepsy, not intractable, with status epilepticus
 - **G40.C11** Lafora progressive myoclonus epilepsy, intractable, **with** status epilepticus
 - **G40.C19** Lafora progressive myoclonus epilepsy intractable **without** status epilepticus

Chronic Migraine – New G Codes to Add Migraine with Aura

- G43.801 Other migraine, not intractable with status migrainosus
- **NEW – G43.E01 Chronic migraine with aura, not intractable, with status migrainosus**
- G43.809 Other migraine, not intractable, without status migrainosus
- **G43.E09 Chronic migraine with aura, not intractable, without status migrainosus**
 - Chronic migraine with aura NOS
- G43.811 Other migraine, intractable, with status migrainosus
- **NEW – G43.E11 Chronic migraine with aura, intractable, with status migrainosus**
- G43.819 Other migraine, intractable, without status migrainosus
- **NEW – G43.E19 Chronic migraine with aura, intractable, without status migrainosus**

Chronic Migraine – New G Codes to Add Migraine with Aura

- ...continued

Chapter 7 & 8

Diseases of the Eye and Adnexa (H00-H59)

Diseases of the Ear and Mastoid process (H60-H95)



Added Laterality to All H35.20-H35.23

- Example: **H35.2 Other non-diabetic proliferative retinopathy**
- **H35.20 Other non-diabetic proliferative retinopathy, unspecified eye**
- **H35.21 Other non-diabetic proliferative retinopathy, right eye**
- **H35.22 Other non-diabetic proliferative retinopathy, left eye**
- **H35.23 Other non-diabetic proliferative retinopathy, bilateral**

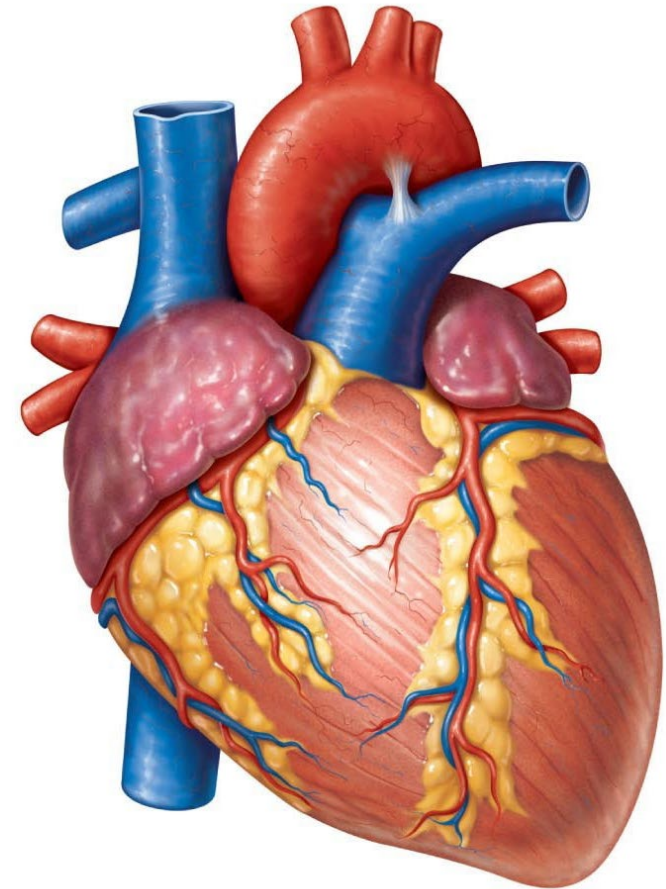
Added Laterality to All H36.811 – H36.89

Example:

- **H36.81 Nonproliferative sickle-cell retinopathy**
 - **H36.811 Nonproliferative sickle-cell retinopathy, right eye**
 - **H36.812 Nonproliferative sickle-cell retinopathy, left eye**
 - **H36.813 Nonproliferative sickle-cell retinopathy, bilateral**
- **H36.819 Nonproliferative sickle-cell retinopathy, unspecified eye**

Chapter 9

Diseases of the Circulatory
System
(100-199)



I1A Other Hypertension

- **NEW: I1A.0 Resistant hypertension**
 - Apparent treatment resistant hypertension
 - Treatment resistant hypertension
 - True resistant hypertension
 - **Code first** specific type of existing hypertension, if known, such as:
 - Essential hypertension (I10)
 - Secondary hypertension (I15.-)

New Resistant Hypertension Guideline

- Resistant hypertension refers to blood pressure of a patient with Hypertension that remains above goal in spite of the use of Antihypertensive medications.
- Assign code I1A.0, Resistant Hypertension, as an additional code when apparent treatment resistant Hypertension, or true resistant Hypertension is documented by the provider.
- A code for the specific Type of existing hypertension is sequenced first, if known

New myocardial infarction with non-obstructive coronary arteries (MINOCA Guideline) and Myocardial Infarction with Coronary Microvascular Dysfunction (CMD)

- Coronary microvascular dysfunction (CMD) is a condition that impacts the microvasculature by restricting microvascular flow and increasing microvascular resistance.
- **I21.B**- Myocardial infarction with coronary microvascular dysfunction (CMD), is assigned for myocardial infarction with coronary microvascular disease, myocardial infarction with coronary microvascular dysfunction, and myocardial infarction with non-obstructive coronary arteries (MINOCA) with microvascular disease.

I20.8 Other forms of angina pectoris

- **Use additional** code(s) for symptoms associated with angina equivalent
- **NEW: I20.81 Angina pectoris with coronary microvascular dysfunction (CMD)**
 - Angina pectoris with coronary microvascular disease
- **I20.89 Other forms of angina pectoris**
 - Angina equivalent
 - Angina of effort
 - Coronary slow flow syndrome
 - Stable angina
 - Stenocardia

I21.B Myocardial infarction with coronary microvascular dysfunction or disease (CMD)

- **I24.8 Other forms of acute ischemic heart disease**
 - **Excludes1:** myocardial infarction due to demand ischemia (I21.A1)
 - **NEW I24.81 Acute coronary microvascular dysfunction (CMD)**
 - Acute (presentation of) coronary microvascular disease
- **I24.89 Other forms of acute ischemic heart disease**
 - **NEW I25.85 Chronic coronary microvascular dysfunction (CMD)**
 - Chronic (presentation of) coronary microvascular disease
 - Coronary microvascular dysfunction NOS
- **I25.89 Other forms of chronic ischemic heart disease**

147.1 Supraventricular tachycardia

3 New Codes

- **147.10 Supraventricular tachycardia, unspecified**
- **147.11 Inappropriate sinus tachycardia, so stated**
 - IST
- **147.19 Other supraventricular tachycardia**
 - Atrial (paroxysmal) tachycardia
 - Atrioventricular [AV] (paroxysmal) tachycardia
 - Atrioventricular re-entrant (nodal) tachycardia [AVNRT] [AVRT]
 - Junctional (paroxysmal) tachycardia
 - Nodal (paroxysmal) tachycardia

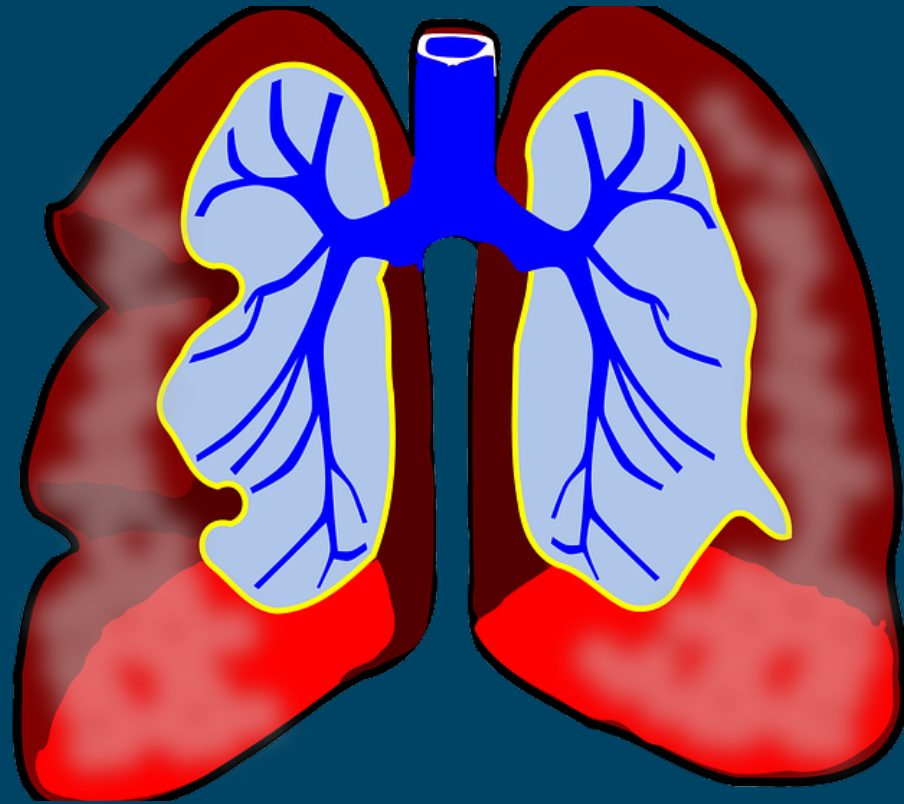
I87.2 Venous insufficiency (chronic) (peripheral)

Additions:

- Use additional code, if applicable, to specify site and severity of ulcer (L97-)
- Code also, if applicable, associated hypertensive conditions such as:
 - I10 Essential (primary Hypertension)
 - I12.-hypertensive chronic kidney disease
 - I13. hypertensive heart and chronic kidney disease
 - I1.-hypertensive heart disease

Chapter 10

Diseases of the Respiratory System



J15.6 Pneumonia due to other Gram-negative bacteria – Expanded

- **J15.61 Pneumonia due to *Acinetobacter baumannii***
- **J15.69 Pneumonia due to other Gram-negative bacteria**
- Pneumonia due to other aerobic Gram-negative bacteria
- Pneumonia due to *Serratia marcescens*

J44.8 Other specified chronic obstructive pulmonary disease

- J44.81 Bronchiolitis obliterans and bronchiolitis obliterans syndrome
 - Obliterative bronchiolitis Code first, if applicable:
 - complication of bone marrow transplant (T86.09)
 - complication of stem cell transplant (T86.5)
 - heart-lung transplant rejection (T86.31)
 - lung transplant rejection (T86.810)
 - other complications of heart-lung transplant (T86.39)
 - other complications of lung transplant (T86.818)
 - Code also, if applicable, associated conditions, such as:
 - chronic graft-versus-host disease (D89.811)
 - chronic lung allograft dysfunction (J4A.-)
 - chronic respiratory conditions due to chemicals, gases, fumes and vapors (J68.4)

J44.8 Other specified chronic obstructive pulmonary disease

■ J44.89 Other specified chronic obstructive pulmonary disease

- Chronic asthmatic (obstructive) bronchitis
- Chronic emphysematous bronchitis
- Code also type of asthma (J45-)
- Excludes1 – chronic bronchitis nos J42
- Chronic simple and mucopurulent bronchitis (J41.-)
- Chronic tracheobronchitis (J42)
- Excludes 2: bronchiectasis (J47.-)
- Emphysema without chronic bronchitis (j43.-)

J4A Chronic lung allograft dysfunction

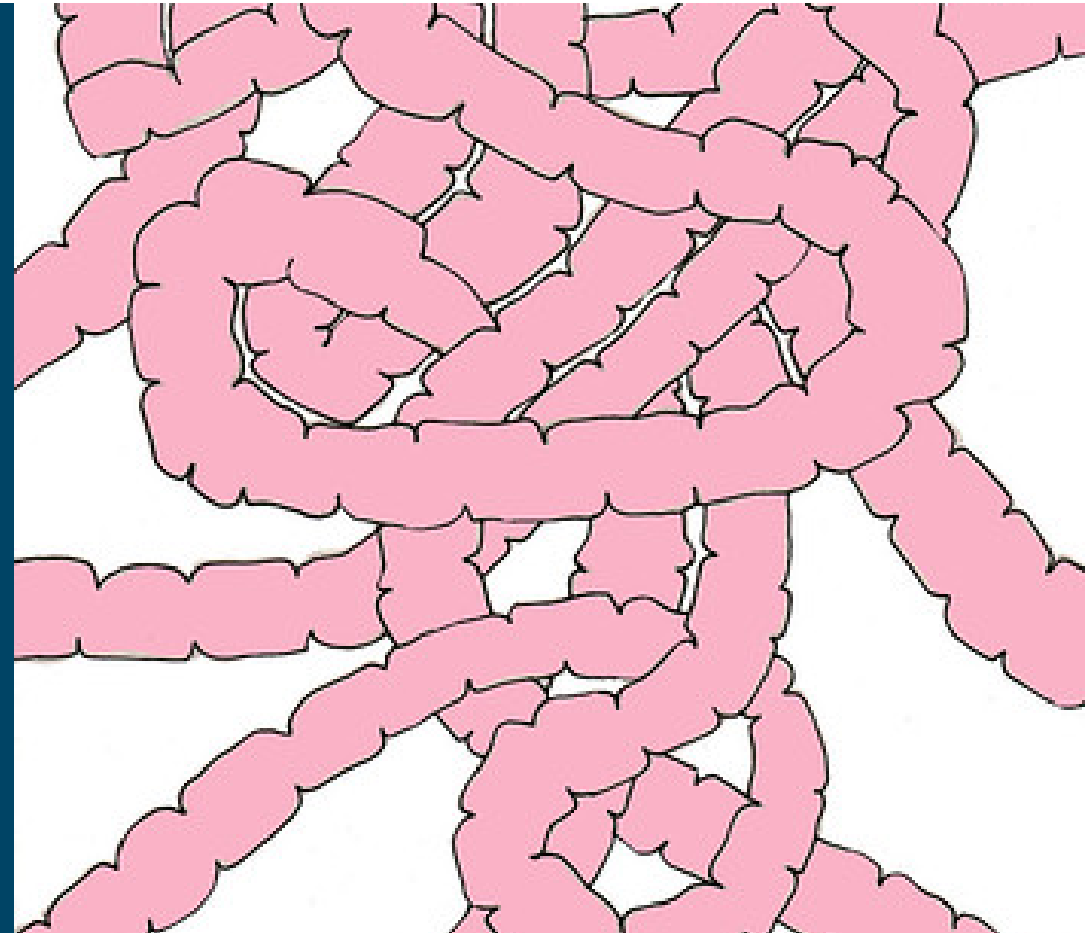
- **Code first**, if applicable:
 - heart-lung transplant rejection (T86.31)
 - lung transplant rejection (T86.810)
 - other complications of heart-lung transplant (T86.39)
 - other complications of lung transplant (T86.818)
- **J4A.0 Restrictive allograft syndrome**
 - **Code also**, if applicable, for mixed chronic lung allograft dysfunction, bronchiolitis obliterans syndrome (J44.81)
- **J4A.8 Other chronic lung allograft dysfunction**
- **J4A.9 Chronic lung allograft dysfunction, unspecified**

J68.4 Chronic respiratory conditions due to chemicals, gases, fumes & vapors

- **Removed old inclusion notes**
- Added Notes: **Code Also** if applicable, **chronic** conditions, such as:
 - J43.- emphysema
 - J44.81 obliterative bronchiolitis
 - J84.10 pulmonary fibrosis
- J68.4 Disease, resp, chronic, due to chemicals, code also condition
 - Bronchitis due to chemicals (see also disease, resp, chronic, due to chemicals)
- J68.4 note to code first the T51-61 (toxic effect) to identify the cause
 - Code also if the condition was there before the chemical

Chapter 11

Diseases of the
Digestive System
(K00-K95)



K35.20 Acute appendicitis with generalized peritonitis, without abscess – Expanded

- **K35.200 Acute appendicitis with generalized peritonitis, without perforation or abscess**
 - (Acute) appendicitis with generalized peritonitis without rupture or perforation of appendix
- **K35.201 Acute appendicitis with generalized peritonitis, with perforation, without abscess**
 - Appendicitis (acute) with generalized (diffuse) peritonitis following rupture or perforation of appendix NOS
- **K35.209 Acute appendicitis with generalized peritonitis, without abscess, unspecified as to perforation**
 - (Acute) appendicitis with generalized peritonitis NOS

K35.21 Acute appendicitis with generalized peritonitis, with abscess

- **K35.210 Acute appendicitis with generalized peritonitis, without perforation, with abscess**
 - (Acute) appendicitis with generalized peritonitis without rupture or perforation of appendix, with abscess
- **K35.211 Acute appendicitis with generalized peritonitis, with perforation and abscess**
 - Appendicitis (acute) with generalized (diffuse) peritonitis following rupture or perforation of appendix, with abscess
- **K35.219 Acute appendicitis with generalized peritonitis, with abscess, unspecified as to perforation**
 - (Acute) appendicitis with generalized peritonitis and abscess NOS

K63.89- K63.89 Other specified diseases of intestine

- **K63.821 Small intestinal bacterial overgrowth**
 - K63.8211 Small intestinal bacterial overgrowth, hydrogen-subtype
 - K63.8212 Small intestinal bacterial overgrowth, hydrogen sulfide-subtype
 - K63.8219 Small intestinal bacterial overgrowth, unspecified
- **K63.822 Small intestinal fungal overgrowth**
- **K63.829 Intestinal methanogen overgrowth, unspecified**

K68 Disorders of retroperitoneum – Expanded

- **K68.2 Retroperitoneal fibrosis**
 - **Code also**, if applicable, associated obstruction of ureter (N13.5)
- **K68.3 Retroperitoneal hematoma**
 - Retroperitoneal hemorrhage
- **K68.9 Other disorders of retroperitoneum**

K90.82 Short bowel syndrome

Short gut syndrome – Expanded

- **K90.821 Short bowel syndrome with colon in continuity**
 - Short bowel syndrome with colonic continuity
- **K90.822 Short bowel syndrome without colon in continuity**
 - Short bowel syndrome without colonic continuity
- **K90.829 Short bowel syndrome, unspecified**
- **K90.83 Intestinal failure**

Chapter 12

Diseases of the skin and
subcutaneous tissue (L00-L99)

NO CHANGES!



Chapter 13

Musculoskeletal system and
connective tissue
(M00-M99)



M80.0A Age-related osteoporosis with current pathological fracture, other site

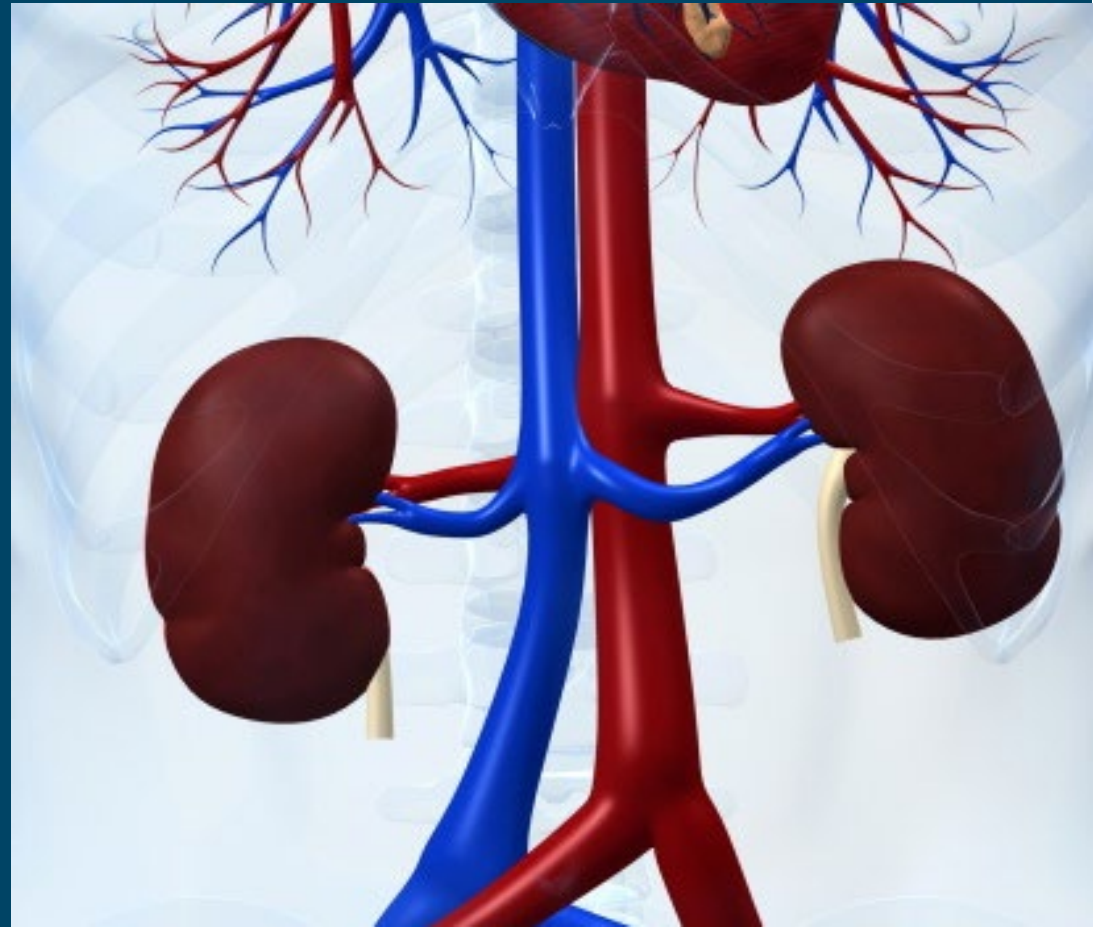
- **Expands For Laterality For Each Type**
- **M80.0B Age-related osteoporosis with current pathological fracture, pelvis**
 - **M80.0B1 Age-related osteoporosis with current pathological fracture, right pelvis**
 - **M80.0B2 Age-related osteoporosis with current pathological fracture, left pelvis**
 - **M80.0B9 Age-related osteoporosis with current pathological fracture, unspecified pelvis**

M97 Periprosthetic fractures

- **M97** Periprosthetic fx around internal prosthetic joint
 - Code first if known the specific type and cause of fracture such a traumatic or pathological
- **M84.462D** Path fx, left tibia, sub enc routine
- **M97.01D** periprosthetic fracture around internal prosthetic
 - Right hip joint subsequent encounter

Chapter 14

Diseases of the
genitourinary system
(N00-N99)



N02 Recurrent and persistent hematuria – Expanded

- **N02.B Recurrent and persistent immunoglobulin A nephropathy**
 - **N02.B1 Recurrent and persistent immunoglobulin A nephropathy with glomerular lesion**
 - **N02.B2 Recurrent and persistent immunoglobulin A nephropathy with focal and segmental glomerular lesion**
 - **N02.B3 Recurrent and persistent immunoglobulin A nephropathy with diffuse membranoproliferative glomerulonephritis**
 - **N02.B4 Recurrent and persistent immunoglobulin A nephropathy with diffuse membranous glomerulonephritis**
 - **N02.B5 Recurrent and persistent immunoglobulin A nephropathy with diffuse mesangial proliferative glomerulonephritis**
 - **N02.B6 Recurrent and persistent immunoglobulin A nephropathy with diffuse mesangiocapillary glomerulonephritis**
 - **N02.B9 Other recurrent and persistent immunoglobulin A nephropathy**

N04.2 Nephrotic syndrome with diffuse membranous glomerulonephritis – Expanded

- **N04.20 Nephrotic syndrome with diffuse membranous glomerulonephritis, unspecified**
 - Membranous nephropathy NOS with nephrotic syndrome
- **N04.21 Primary membranous nephropathy with nephrotic syndrome**
 - Idiopathic membranous nephropathy with nephrotic syndrome
- **N04.22 Secondary membranous nephropathy with nephrotic syndrome**
 - **Code first**, if applicable, other disease or disorder or poisoning causing membranous nephropathy
 - **Use additional** code, if applicable, for adverse effect of drug causing membranous nephropathy
- **N04.29 Other nephrotic syndrome with diffuse membranous glomerulonephritis**

N06.2 Isolated proteinuria with diffuse membranous glomerulonephritis – Expanded

- **N06.20 Isolated proteinuria with diffuse membranous glomerulonephritis, unspecified**
 - Membranous nephropathy, NOS
 - **Excludes1:** membranous nephropathy NOS with nephrotic syndrome (N04.20)
- **N06.21 Primary membranous nephropathy with isolated proteinuria**
 - Idiopathic membranous nephropathy (with isolated proteinuria)
 - Primary membranous nephropathy, NOS
 - **Excludes1:** primary membranous nephropathy with nephrotic syndrome (N04.21)
- **N06.22 Secondary membranous nephropathy with isolated proteinuria**
 - Secondary membranous nephropathy, NOS
 - **Code first**, if applicable, other disease or disorder or poisoning causing membranous nephropathy
 - **Use additional** code, if applicable, for adverse effect of drug causing membranous nephropathy
 - **Excludes1:** secondary membranous nephropathy with nephrotic syndrome (N04.22)
- **N06.29 Other isolated proteinuria with diffuse membranous glomerulonephritis**

Chapter 15

Pregnancy, childbirth,
and the puerperium
(O00-O9A)



O90.4 Postpartum acute kidney failure – Expanded

- **Excludes1:** non-anuria and oliguria (R34)
- **O90.41 Hepatorenal syndrome following labor and delivery**
- **O90.49 Other postpartum acute kidney failure**
 - Postpartum acute kidney failure
 - Puerperal anuria
 - Puerperal oliguria

O26.64 Intrahepatic cholestasis of pregnancy

- **O26.641 Intrahepatic cholestasis of pregnancy, first trimester**
- **O26.642 Intrahepatic cholestasis of pregnancy, second trimester**
- **O26.643 Intrahepatic cholestasis of pregnancy, third trimester**
- **O26.649 Intrahepatic cholestasis of pregnancy, unspecified trimester**

O90.4 Postpartum acute kidney failure

- **Excludes1:** non-anuria and oliguria (R34)
- **O90.41 Hepatorenal syndrome following labor and delivery**
- **O90.49 Other postpartum acute kidney failure**
 - **Postpartum acute kidney failure**
 - Puerperal anuria
 - Puerperal oliguria

Chapter 16

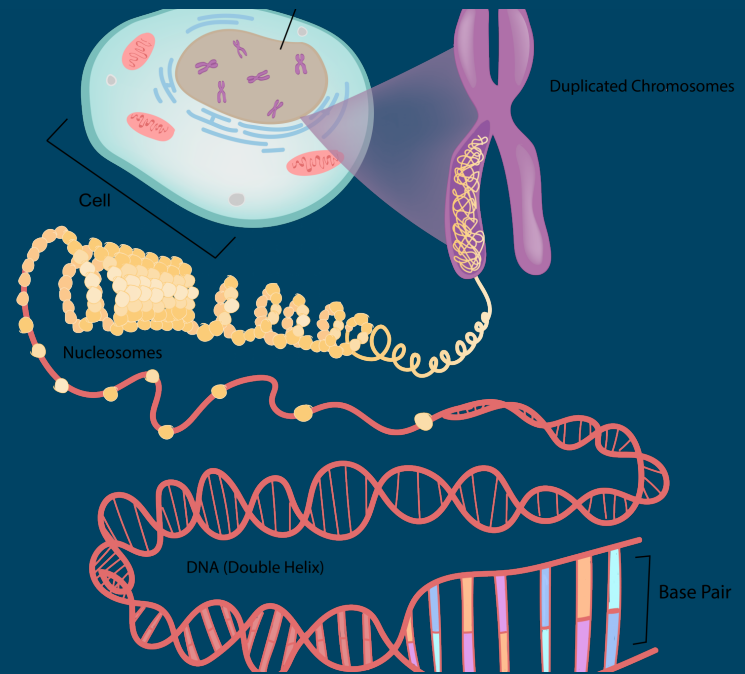
Certain conditions originating
in the perinatal period (P00-P96)

NO CHANGES!



Chapter 17

Congenital malformations,
deformations and chromosomal
abnormalities
(Q00-Q99)



Q44.7 Other congenital malformations of liver

- **Code also**, if applicable, associated malformations affecting other systems
- **Q44.70 Other congenital malformation of liver, unspecified**
 - Congenital malformation of liver, NOS
- **Q44.71 Alagille syndrome**
 - Alagille-Watson syndrome
- **Q44.79 Other congenital malformations of liver**
 - Accessory liver
 - Congenital absence of liver
 - Congenital hepatomegaly

EXPANDS Q75.0 Craniosynostosis With 15 NEW Codes

Example:

- **Q75.00 Craniosynostosis unspecified**
- Craniosynostosis NOS
 - **Q75.001 Craniosynostosis unspecified, unilateral**
 - **Q75.002 Craniosynostosis unspecified, bilateral**
 - **Q75.009 Craniosynostosis unspecified**
- Imperfect fusion of skull

Q75.05 Multi-suture craniosynostosis

- **Q75.051 Cloverleaf skull**
 - Kleeblattschaedel skull
- **Q75.052 Pansynostosis**
- **Q75.058 Other multi-suture craniosynostosis**

Chapter 18

Symptoms, signs,
and abnormal clinical and
laboratory findings, not
elsewhere classified
(R00-R99)



R09.8 Other specified symptoms and signs involving the circulatory and respiratory systems – Expanded

- **R09.A** Foreign body sensation of the circulatory and respiratory system
 - **R09.A0** Foreign body sensation, unspecified
 - **R09.A1** Foreign body sensation, nose
 - **R09.A2** Foreign body sensation, throat
 - **R09.A9** Foreign body sensation, other site

R40.20 Unspecified coma

Coma NOS Unconsciousness NOS

- **R40.2A** Nontraumatic coma due to underlying condition
 - Secondary coma
 - **Code first** underlying condition
 - Guideline: **Code R40.20**, Unspecified coma, **should** be assigned **when the underlying cause of the coma is not known, or the cause is a traumatic brain injury and the coma scale is not documented in the medical record.**

R64 Cachexia

- **Cachexia NOS (R64)**

- **Excludes1:**

- Abnormal weight loss (R63.4)
- Nutritional marasmus (E41)
- Failure to thrive (R62.51, R62.7)

- **E88.A Wasting disease** (syndrome) due to underlying condition

- Cachexia due to underlying condition
- **Code** first underlying condition

Chapter 19

Injury, poisoning and
certain other consequences
of external causes
(S00-T88)



T56.82 Toxic effect of gadolinium

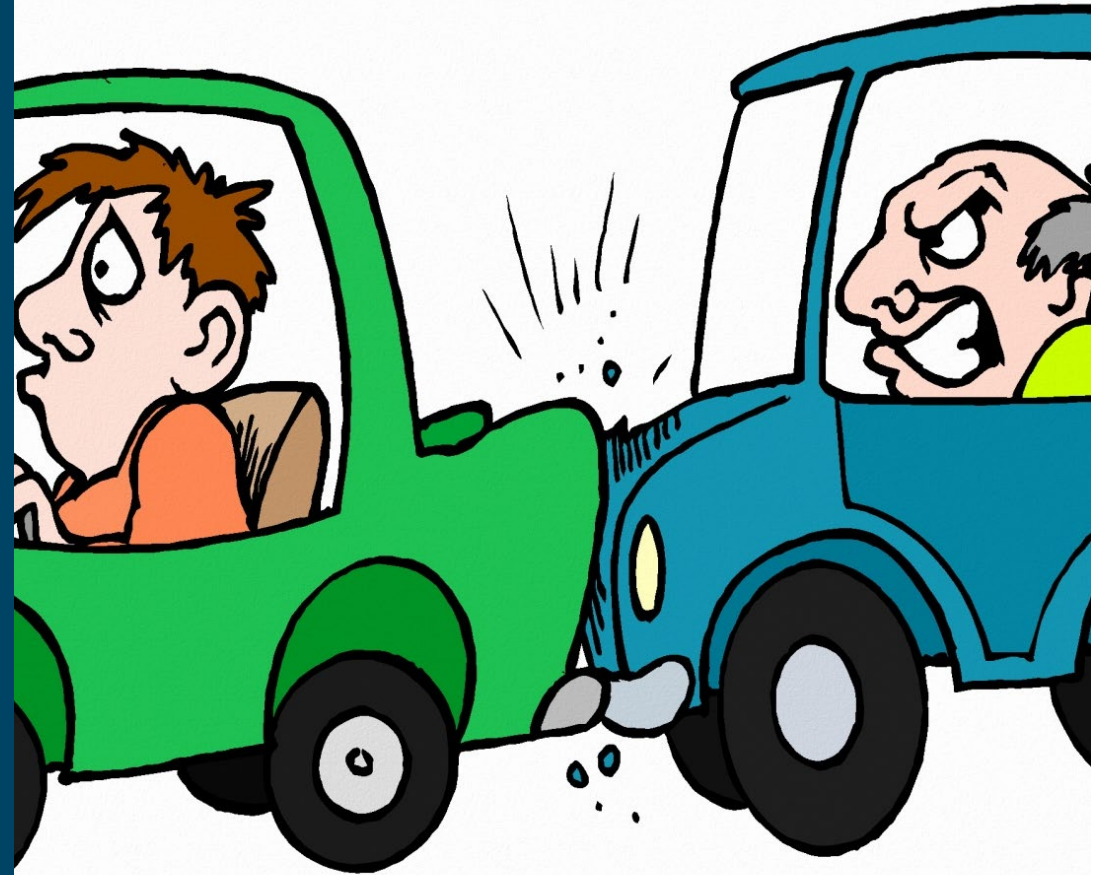
- **New: 12 codes in T56.821 for more specificity**
 - **T56.82 Toxic effect of gadolinium**
 - Excludes1: adverse effect of diagnostic agents (T50.8X5-)
 - **T56.821 Toxic effect of gadolinium, accidental (unintentional)**
 - Toxic effect of gadolinium NOS
 - **T56.822 Toxic effect of gadolinium, intentional self-harm**
 - **T56.823 Toxic effect of gadolinium, assault**
 - **T56.824 Toxic effect of gadolinium, undetermined**
 - **T56.89 Toxic effects of other metals**

T81.83 Persistent postprocedural fistula

- **Added Use Additional Codes:**
- If known for site of fistula such as:
 - K60.3 anal fistula
 - K60.5 anorectal fistula
 - N32.2 bladder fistula
 - N82.4 other female intestinal-genital tract fistulae

Chapter 20

External causes of morbidity
(V00-Y99)



W44 Foreign body entering into or through a natural orifice

122 New Codes

Examples:

- **W44.C Glass entering into or through a natural orifice**
- **W44.C0 Glass unspecified, entering into or through a natural orifice**
- **W44.C1 Sharp glass entering into or through a natural orifice**
 - Glass shard entering into or through a natural orifice
- **W44.C2 Intact glass entering into or through a natural orifice**
 - Intact glass bottle entering into or through a natural orifice

W44 - More examples

- **W44.G Other non-organic objects entering into or through a natural orifice**
- **W44.G0 Other non-organic objects unspecified, entering into or through a natural orifice**
- **W44.G1 Audio device entering into or through a natural orifice**
 - Ear buds
 - Hearing aids
- **W44.G2 Combination metal and plastic toy and toy part entering into or through natural orifice**
- **W44.G3 Combination metal and plastic jewelry entering into or through a natural orifice**
- **W44.G9 Other non-organic objects entering into or through a natural orifice**

W44 - More examples

- **W44.H Other sharp object entering into or through a natural orifice**
- **W44.H0 Other sharp object unspecified, entering into or through a natural orifice**
- **W44.H1 Needle entering into or through a natural orifice**
 - Dart entering into or through a natural orifice
 - Hypodermic needle entering into or through a natural orifice
 - Safety pin entering into or through a natural orifice
 - Sewing needle entering into or through a natural orifice
- **W44.H2 Knife, sword or dagger entering into or through a natural orifice**
- W44.G1 audio device
- W44.A0 battery
- W44.E9 bottle cap, can lid
 - Jewelry, toy, dagger, dart, insect, coin, bottle, safety pin, rubber band, and SWORD!

External Cause – Hundreds of Updates:

- **V80** Animal-rider or occupant of animal-drawn vehicle injured in transport accident
- **V80.0** Animal-rider or occupant of animal drawn vehicle injured by fall from or being thrown from animal or animal-drawn vehicle in non-collision accident
- **V80.01** Animal-rider injured by fall from or being thrown from animal in non-collision accident
- **V80.010** Animal-rider injured by fall from or being thrown from horse in non-collision accident
- **V80.018** Animal-rider injured by fall from or being thrown from other animal in non-collision accident

Y07 Perpetrator of assault, maltreatment and neglect – Expanded

- **Y07.01** Husband, perpetrator of maltreatment and neglect
 - **New: Y07.010** Husband, current, perpetrator of maltreatment and neglect
 - **New: Y07.011** Husband, former, perpetrator of maltreatment and neglect
- **Y07.44 Child, perpetrator of maltreatment and neglect**
 - Adopted child, perpetrator of maltreatment and neglect
 - Biological child, perpetrator of maltreatment and neglect
 - Daughter, perpetrator of maltreatment and neglect
 - Foster child, perpetrator of maltreatment and neglect
 - In-law child, perpetrator of maltreatment and neglect
 - Non-binary child, perpetrator of maltreatment and neglect
 - Son, perpetrator of maltreatment and neglect
 - Stepchild, perpetrator of maltreatment and neglect

Chapter 21

Factors influencing
health status and
contact with health
services
(Z00-Z99)



Z16.1 Resistance to beta lactam antibiotics

- **Z16.13 Resistance to carbapenem**
- **Z16.19 Resistance to other specified beta lactam antibiotics**
 - Resistance to cephalosporins

Z22.39 Carrier of other specified bacterial diseases

- **Z22.34 Carrier of Acinetobacter baumannii**
- **Z22.340 Carrier of carbapenem-resistant Acinetobacter baumannii**
- **Z22.341 Carrier of carbapenem-sensitive Acinetobacter baumannii**
- **Z22.349 Carrier of Acinetobacter baumannii, unspecified**
- **Z22.350 Carrier of carbapenem-resistant Enterobacterales**
- **Z22.359 Carrier of Enterobacterales, unspecified**

Z29.8 Encounter for other specified prophylactic measures – Guidelines

- **Z29.81 Encounter for HIV pre-exposure prophylaxis**
 - **Code also**, if applicable, risk factors for HIV, such as:
 - Contact with and (suspected) exposure to human immunodeficiency virus [HIV] (Z20.6)
 - High risk sexual behavior (Z72.5-)
- **Z29.89 Encounter for other specified prophylactic measures**

Z62.29- Other upbringing away from parents – Expanded

- **FZ62.23 Child in custody of non-parental relative**

- Child in care of non-parental family member
- Child in custody of grandparent
- Child in kinship care
- Guardianship by non-parental relative
 - **Code also**, if applicable, child in welfare custody (Z62.21)

- **Z62.24 Child in custody of non-relative guardian influencing**

5 New Codes for Z62.823- More Specificity

- **Z62.83 Non-parental relative or guardian-child conflict**
- **Z62.831 Non-parental relative-child conflict**
 - Grandparent-child conflict
 - Kinship-care child conflict
- Non-parental relative legal guardian-child conflict
- **Z62.832 Non-relative guardian-child conflict**
- **Excludes1:** group home staff-child conflict (Z62.833)
- **Z62.833 Group home staff-child conflict**

Z83.71 Family history of colonic polyps Expands by 4 codes for specificity

- **Z83.710 Family history of adenomatous and serrated polyps**
- **Z83.711 Family history of hyperplastic colon polyps**
- **Z83.718 Other family history of colon polyps**
 - Family history of inflammatory colon polyps
- **Z83.719 Family history of colon polyps, unspecified**

Z91.A4 Caregiver's other noncompliance with patient's medication regimen - Expanded to:

- **Z91.A58 Caregiver's noncompliance with patient's renal dialysis for other reason**
 - **Expanded Z91.A9 Caregiver's noncompliance with patient's other medical treatment and regimen**
 - Caregiver's nonadherence to patient's medical treatment
 - **Z91.A91 Caregiver's noncompliance with patient's other medical treatment and regimen due to financial hardship**
- **Z91.A98 Caregiver's noncompliance with patient's other medical treatment and regimen for other reason**

Z91.14 Patient's other noncompliance with medication regimen - Expanded

- **Z91.141 Patient's other noncompliance with medication regimen due to financial hardship**
- **Z91.148 Patient's other noncompliance with medication regimen for other reason**

Expanded Z59.1 Inadequate housing

- **Excludes1:** problems related to the natural and physical environment (Z77.1-)
- **Z59.10 Inadequate housing, unspecified**
 - Inadequate housing NOS
- **Z59.11 Inadequate housing environmental temperature**
 - Lack of air conditioning
 - Lack of heating
- **Z59.12 Inadequate housing utilities**
 - Lack of electricity services
 - Lack of gas services
 - Lack of oil services
 - Lack of water services

Z58.8 Other problems related to physical environment – Expanded

- **Z58.81 Basic services unavailable in physical environment**
 - Unable to obtain internet service, due to unavailability in geographic area
 - Unable to obtain telephone service, due to unavailability in geographic area
 - Unable to obtain utilities, due to inadequate physical environment
- **Z58.89 Other problems related to physical environment**

Expanded Z62.81 Personal history of abuse in childhood

- **Z62.814 Personal history of child financial abuse**
 - **Excludes1:** current child financial abuse (T74.A2)
- **Z62.815 Personal history of intimate partner abuse in childhood**
 - **Excludes2:** adult and child abuse, neglect and other maltreatment, confirmed (T74.-)

Z91.419 Personal history of unspecified adult abuse - Expanded

- **Z91.413 Personal history of adult financial abuse**
- **Z91.414 Personal history of adult intimate partner abuse**
- **Also seen in the T CHAPTER - T74 Adult and child abuse, neglect and other maltreatment, confirmed – Expanded**
- **Use additional** code, if applicable, to identify any associated current injury
- **Use additional** external cause code to identify perpetrator, if known (Y07.-)
- **Example: Expanded T74.A Financial abuse, confirmed**
 - **T74.A1 Adult financial abuse, confirmed**
 - **T74.A2 Child financial abuse, confirmed**

Conclusion

- A Lot of new codes BUT less than what we've had annually since ICD 10.
- The Guidelines have changes as well...so be sure to pay attention to those as well!
- Also be sure to follow all of the instructions, such as excludes 1 and 2 notes, Code First, Code Also, etc. etc.
- Code to the highest level of specificity.
- Most of all, code to the providers documentation!
- Query the provider when you do not have sufficient information – starting with Intake/Admission.
- By the time a coder gets the record, all diagnoses should be consistent and accurate!



CAN'T WAIT TO SEE YOU IN ORLANDO!

January 22–24, 2024

achcu.com/academy



EDUCATIONAL RESOURCES

Thank you

Sharon Litwin

slitwinconsulting@outlook.com

Litwin Home Health
Consulting, LLC



Litwinhomehealthconsulting.net

 HOME HEALTH  HOSPICE



ACHCU IS A BRAND OF ACCREDITATION COMMISSION *for* HEALTH CARE

